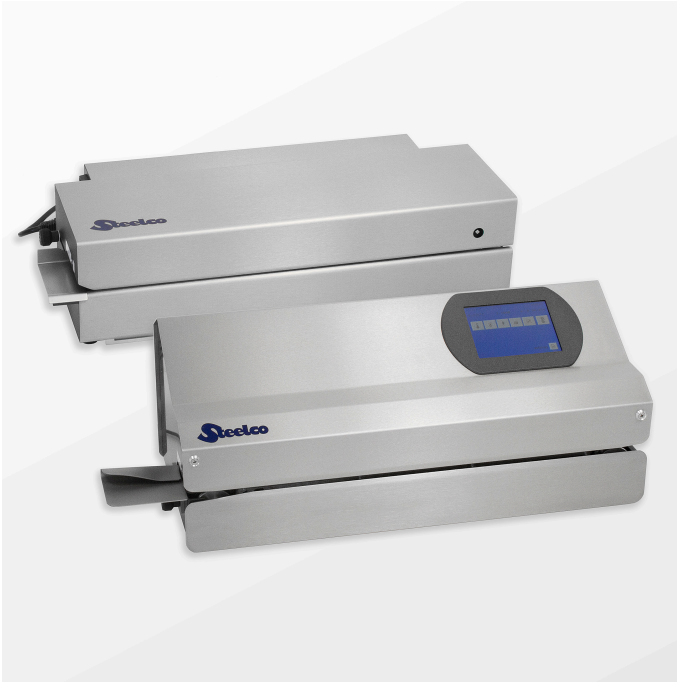


## Steelco PS Pouch sealer range



Main purpose of every packaging system for medical products, which are sterilized during the final packaging, is maintaining the sterility until use or until aseptic preparation at the patient.

The Steelco range of rotary pouch sealers and accessories ensure the aseptic integrity of single use sealable pouches.

Models are equipped with the monitoring of temperature, contact pressure and sealing speed to provide the optimum seal that is strong enough yet easy to peel.

Steelco PS sealers are made of robust stainless steel with flat surfaces for ease of cleaning. The range is equipped with energy saving functions including automatic standby function.

Versions are available with integrated printers that adjust the font size to the pouch width and touch screen panels.

Several models can be linked to instrument tracking systems and printers.

### Dimensions

#### Models:

**Steelco PS 300** WxDxH:  
710 x 260 x 240 mm  
27.95 x 10.24 x 9.45 inch  
Weight 21Kg

**Steelco PS 200** WxDxH:  
560 x 255 x 145 mm  
22.05 x 10.04 x 5.71 inch  
Weight 15Kg

**Steelco PS 100** WxDxH:  
560 x 225 x 145 mm  
22.05 x 8.86 x 5.71 inch  
Weight 12Kg

### Standard compliances

The sealing machine meets the requirements of EN ISO 11607-2 and the resulting ISO/TS 16775:2014 guideline for validating the sealing process.

In accordance with the intended use, the CE marking is displayed based on the following EU directives: 2006/42/CE, 2011/65/CE and 2004/108/CE.

Medical device directive 93/42/CE is not applicable to sealing machine

Rev.02

## Sealable materials

---

Pouches and reels in accordance with EN 868-5 and EN ISO 11607-1\*

Paper pouches in accordance with EN 868-4\*  
HDPE (e.g. Tyvek™, 1059B, 1073B and 2FS)\*  
Aluminum laminate film

\* also with side gusset

The correct sealing temperature must be identified by means of test sealings.

The machine output depends on the condition of the sealing material used.

### Non-sealable materials

Polyethylene film  
Soft PVC film  
Hard PVC foils  
Polyamide film  
Polypropylene film.

## Standard features

---

The printing process is triggered by means of a photoelectric cell when the pressure is switched on and the activated print data is printed onto the sealed packaging.

### Steelco PS 300

- Integrated printer with automatic font size adjustment.
- Adjustable sealing temperature, speed (up to 13 m per minute) and pressure with unit counter.
- Automatic standby (after approximately 30 seconds) and fast start up function.
- Programmable and operated through an colour touch screen panel
- RS232, USB and Ethernet connection as standard.

### Steelco PS 200

- Integrated printer with automatic font size adjustment.
- Programmable and operated via touch keys.
- RS232 connection.
- Sealing temperature, speed and pressure monitoring.
- Automatic standby (after approximately 30 seconds) and fast start up function.

### Steelco PS 100

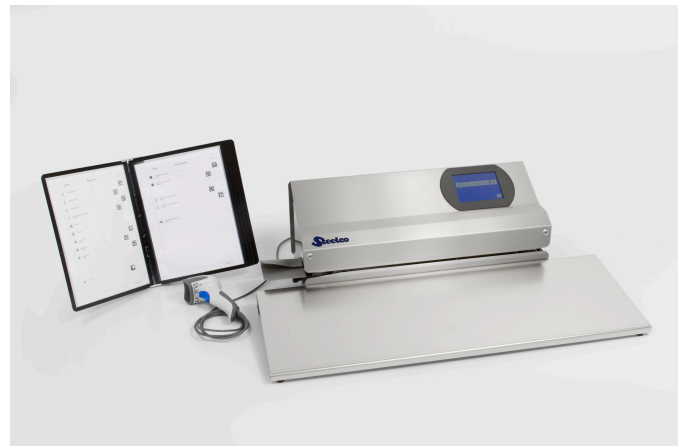
- Programmable and operated via touch keys.
- Sealing temperature, speed and pressure monitoring.
- Automatic standby (after approximately 30 seconds) and fast start up function.

## Connection of a barcode scanner

---

### PS barcode scanner and software

Can operate PS 300 and PS 200 sealers, with automatic assignment to the appropriate device function using barcode lists reading the custom specific packaging information.



The machine can be connected through an interface directly to the batch documentation system.

Rev.02

## Specifications

	Steelco PS 300	Steelco PS 200	Steelco PS 100
<b>Sealing properties</b>			
Sealing distance from edge	0-35mm	0-35mm	0-35mm
Seal width (up to 19mm on request)	12mm	12mm	12mm
Sealing speed	5-13m per min	10m per min	10m per min
Distance to edge of instrument in pouch	> 30mm	> 30mm	> 30mm
Power	400 W	390W	390W
Sealable pouches and reels	*	*	*
Tyvek <sup>®</sup> , non woven, SMS and other EN ISO 11607-1 approved	*	*	*
Reverse feed	*	*	*
Sealing temperature	max 200° C	max 200° C	max 200° C
2°C temperature regulation tolerance with overheat protection	*	*	*
Contact pressure	70-130N	100N	100N
Piece counter	*	*	
Printing	*	*	
Packaging time + date, expiry, batch, operator and device	*	*	
Automatic font size adjustment according to pouch size	*	*	
Print image rotation and print barcode	*		
Print out of sealing test parameters	*	*	
<b>Communications</b>			
RS 232	*	*	
USB	*	Option	
Ethernet	*		
PC configurable with PC back up function	*	*	

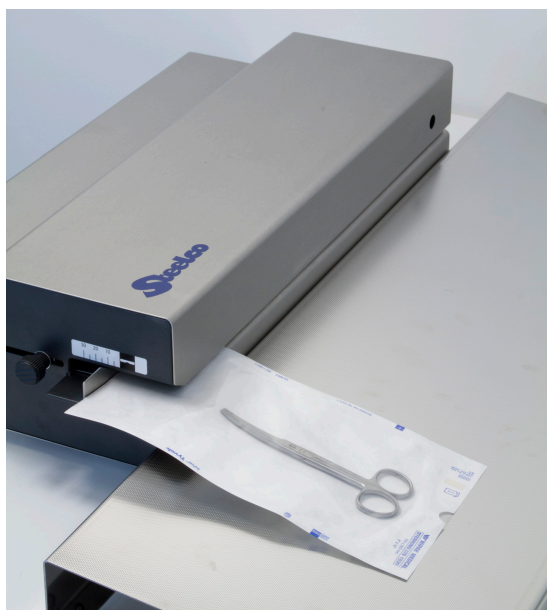
Rev.02

Steelco S.p.a. – VIA BALEGANTE 27 – 31039 RIESE PIO X (TV)

Tel. 0039 0423 7561 Fax 0039 0423 755528 www.steelcospa.com e-mail: [steelco@steelcospa.com](mailto:steelco@steelcospa.com)

Capitale sociale Euro 3.000.000 i.v. C.F., P.IVA e Numero Registro Imprese di Treviso: 04311220265 REA TV 339832

	Steelco PS 300	Steelco PS 200	Steelco PS 100
External label printer connection	*		
Compatible with SteelcoData traceability system	*	*	
Barcode scanner compatible	*	*	
<b>Standards and power supply</b>			
Warranty	2 years	2 Years	2 Years
Compliance to ISO 11607-2, DIN 58953-7	*	*	*
Validatable process in accordance with ISO 11607-2	*	*	*
Monitor sealing temperature, contact pressure, speed	*	*	(only temperature and pressure)
Standby energy efficiency mode & autostart	*	*	*
Mains Voltage	100-240 V	110/115/230 V	110/115/230 V
Mains frequency	50/60 hz	50/60 hz	50/60 hz
Settings recall and date readjust after power failure	*	*	*
Weight	21Kg	15Kg	12Kg
Dimensions width x depth x height in mm	710 x 260 x 240	560 x 255 x 145	510 x 225 x 145



The precise name and the serial number are written on the type plate attached on a side of the machine.

Sterilization packaging must be inserted from the left-hand side, always with the side to be printed face down. The drive is switched on automatically.


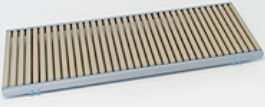




Remove the sealed sterilization packaging and leave briefly to cool.

The material to be sealed must be sealed according to the manufacturer's instructions.

Easy maintenance thanks to frontal access.

Rev.02

**Steelco PS Accessories.** A range of accessories is offered including single and twin level cutting devices, roller conveyors or tray that can be integrated into workstations to provide optimal workflow efficiency and user ergonomics.

	Description	PS 300	PS 200	PS 100
	<p><b>PS tray</b>  cod. 99911310  Compatible with all Steelco PS pouch sealers.</p>	*	*	*
	<p><b>PS roller conveyor</b>  cod. 99911312  Compatible with all Steelco PS pouch sealers.</p>	*	*	*
	<p><b>PS Pouch seal cutter</b>  cod. 99911314  For the storage and cutting of different size pouch reels.  cod. 99911322  2nd level reel storage available as option.</p>	*	*	*
	<p><b>PS barcode scanner and software</b>  cod. 99911313  Can operate PS 300 and PS 200 sealers, with automatic assignment to the appropriate device function using barcode lists reading the custom specific packaging information.</p>	*	*	
	<p><b>PS barcode printer</b>  cod. 99911321  Prints labels with batch identification, sterilisation date, type, expiration.</p>	*	*	
	<p><b>PS ink test</b>  cod. 99911332  Cost effective easy to use daily ink test according to ISO 11607-2 packed in box of 30 to test pouch seal integrity.</p>	*	*	*