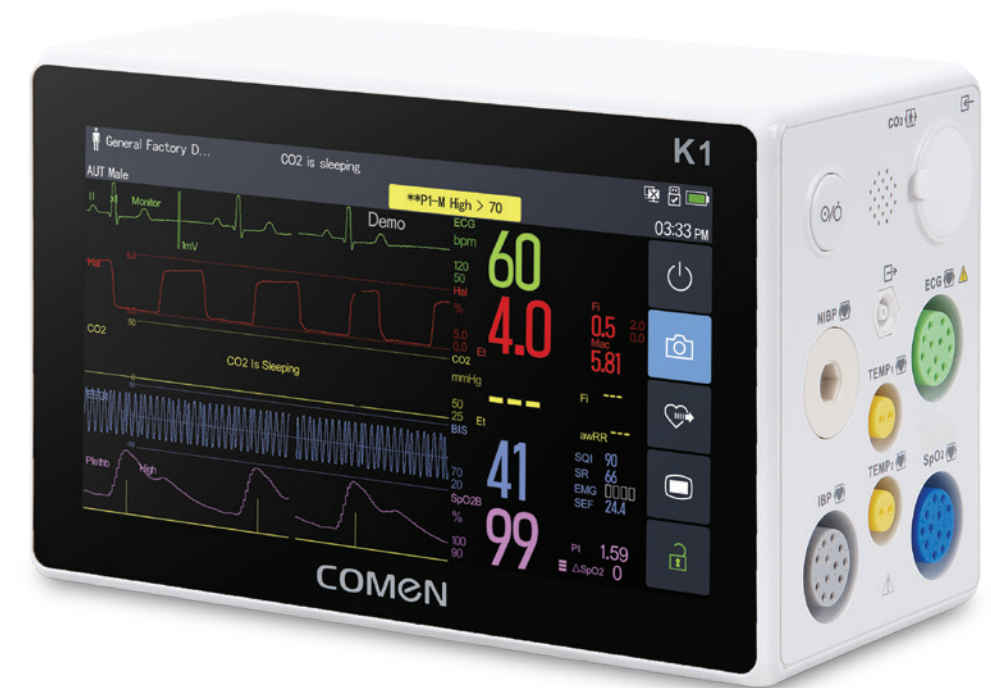
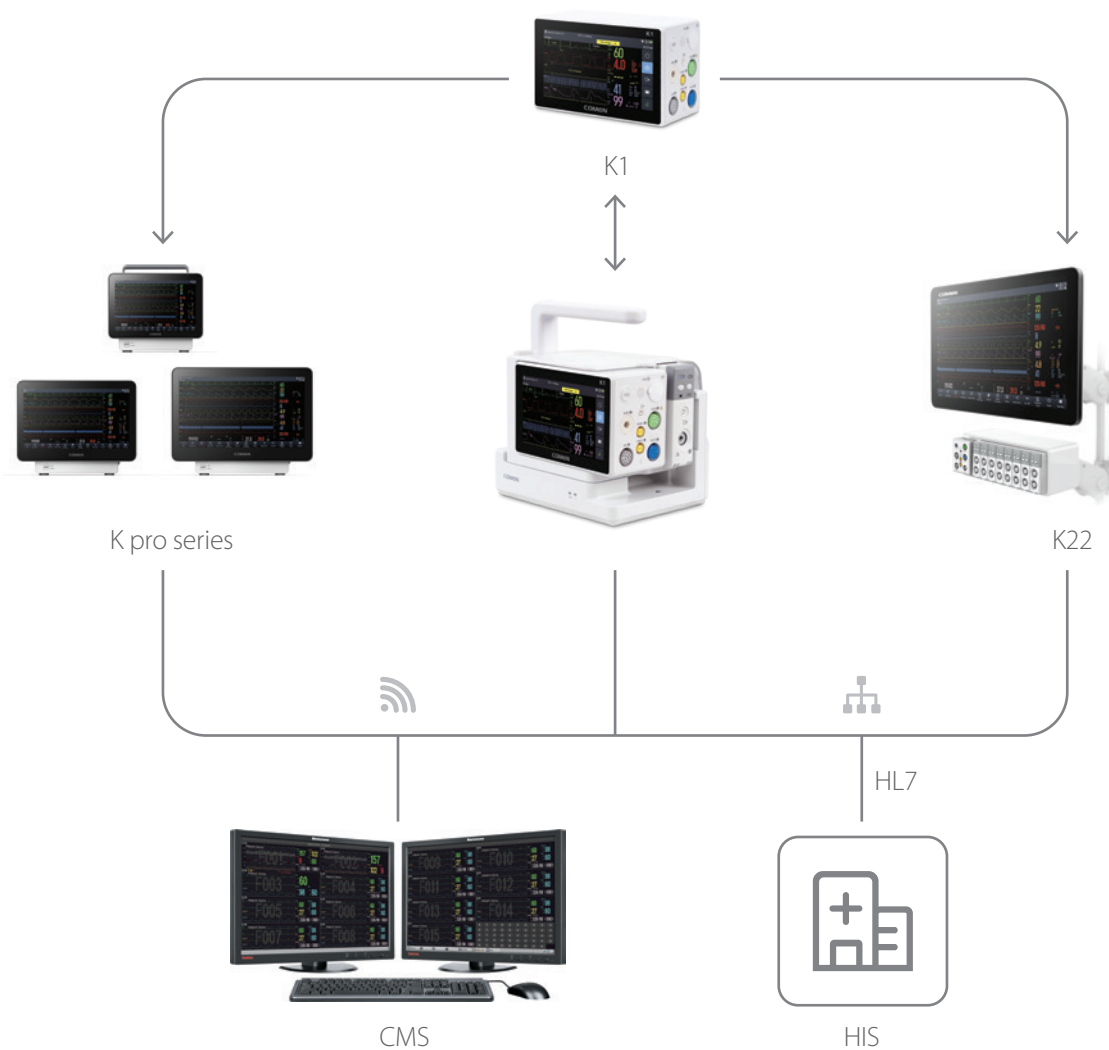


COMEN

Stay connected anytime, anywhere

To make a real-time diagnosis, it requires that K1 should stay connected anytime and anywhere. K1 adopts high technology in a network connection. Patient data in K1 can be transferred to the central monitoring system through WiFi communication even on the move or through a wired or wireless connection at the bedside.

Besides, as one part of the K series patient monitor, working as a play-and-plug multi-parameter module, K1 can upload patient data to the bedside patient monitor even offline before or after transport.



K1

Emergency and Transport Patient Monitor



Shenzhen Comen Medical Instruments Co., Ltd.

Add: Floor 10, Floor 11 and Section C of Floor 12 of Building 1A & Floor 1 to Floor 5 of Building 2, FIYTA Timepiece Building, Nanhuan Avenue, Matian Sub-district, Guangming District, Shenzhen, Guangdong, 518106, P.R. China

Tel:+86-755-2640 8879 Fax:+86-755-2643 1232 Website: en.comen.com E-mail: info@szcomen.com

P/N: EN-K1-8P-20210616-V1.2



Diverse Solutions, One-Stop Care

Nowadays, patient monitoring during transport is becoming more and more important, requires timeliness, continuity and comprehensiveness. K1 is designed for seamless patient monitoring during transport and at the bedside. Clinicians can stay informed anytime and anywhere. To extend functions, K1 can be equipped with Module Rack and Docking Station, delivers both basic and advanced parameter measurements for low-acuity, mid-acuity and high-acuity patients.

Inspired by the idea of Specialized Product, Specific Usage, K1 satisfies different clinical demands by providing diverse solutions for different departments including Emergency, ICU, OR and General Ward.

As a dual-purpose patient monitor, K1 can work as not only an independent patient monitor but also a multi-parameter module, which makes it flexibly change the role in different scenarios, ensuring one-stop care from beginning to end for patients through seamless access to patient information.

Reliable prehospital and in-hospital care during transport

K1 satisfies out-of-hospital transport standards including EN1789, in Emergency Department, it can be used as a specialized road ambulance transport patient monitor.



Equipped with Module Rack, K1 is convenient during in-hospital transport. You can continue to monitor the patient even on the move.

Seamless access to patient data as a multi-parameter module



K1 is a part of K series patient monitor family, in ICU or OR, it can be used as a plug-and-play multi-parameter module. K1 directly connects to K series modular patient monitor to transfer patient data. This solution provides advanced measurements for high-acuity patients.

Extensible, independent bedside monitoring. Just dock it.

Equipped with Module Rack and Docking Station, K1 turns to a compact and flexible bedside patient monitor. K1 can be connected to an external display through Docking Station, which makes it easy to view your patient's vital signs and remotely perform operations on a second, large display. There are 2 types of external display: Mirror-screen display and Independent-screen display.



Mirror-screen display

Patient data in Mirror-screen and in K1 screen is synchronously displayed. You can see patient data and control K1 outside the care area.



Independent-screen display

Independent-screen can display different information from K1, more information than K1, which expands functions.

It is small yet strong, and intuitive.

K1 insists on user-oriented design. K1 has the features such as elegant appearance, light and handy structure, easy-to-use interface, simple operation and stable quality, making clinicians feel at ease while using it.



Compact and Portable

K1 adopts compact and durable design, which strengthens its stability. It's small and light enough to carry easily to wherever.



Compact size 148.4x79.2x96.5mm
Light weight 2.5kg



Fixed handle and clip of Module Rack,
comfortable to carry



Intuitive and Clear

It's fast and simple to operate K1 through a medical-grade touchscreen and intuitive views.



5.5-inch capacitive touchscreen
1280x720 high resolution



Support multi-touch operation, easy to learn
and operate

Durable and Reliable

K1 is strong and sturdy enough to avoid damage during transport. With great performance in battery life, K1 enhances continuous patient monitoring on the move.



IP44 Ingress Protection

K1 supports IP44 grade dust/water-proof resistance, making it easy to face strict environment challenges.



1.2m Drops Endurance

K1 has passed free fall test and survives drops from up to 1.2 meters. It's anti-fall and anti-shock.



10-hour Battery Life

K1 provides long standby time with a built-in battery. It can work not less than 10 hours.

Comprehensive diagnosis, improving efficiency

Based on the needs of different critical care, K1 can provide comprehensive and accurate monitoring for patients. It not only enhances maximum flexibility and functionality through the Module Rack and Docking Station, but also has strong information management to help clinicians make informed diagnosis and improve efficiency.

Efficient, Flexible Monitoring

K1 delivers basis measurements including 3/5/6/12-lead ECG with ST and QT analysis, respiration, NIBP, SpO₂, temperature, built-in sidestream EtCO₂ and dual IBP.

With Module Rack, K1 supports one extended module and provides advanced measurements including mainstream/sidestream EtCO₂, dual IBP, invasive cardiac output(C.O.), BIS, AG, NMT, RM and Rainbow SpO₂. Besides, K1 specially supports apnea wake-up function for infants.

Providing accurate and flexible measurements, K1 ensures comprehensive patient monitoring across all levels of hospital care during transport or at the bedside.



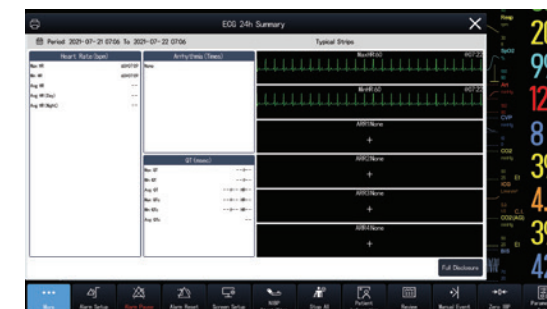
More Information, Make informed diagnosis

K1 has strong data storage and information management. More information is important for clinicians to make an informed diagnosis.

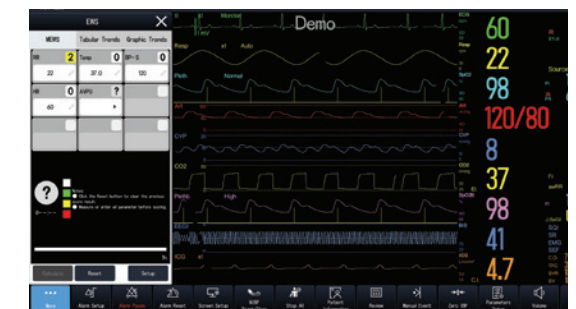


A big amount of alarm events, NIBP, trend graphs, trend tables, full-disclosure waveforms, and arrhythmia events can be stored and reviewed in K1.

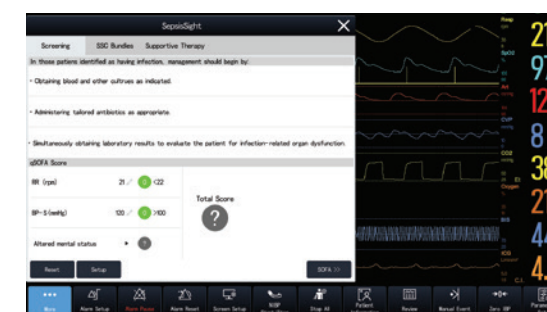
When K1 is connected to the external display, it can offer Clinical Assistant Application(CAA), including Early Warning Score (EWS), Glasgow Coma Scale (GCS), SpesisSight and ECG 24H Summary, which help clinicians make decisions with confidence.



24 hours ECG Summary



EWS



SepsisSight



GCS